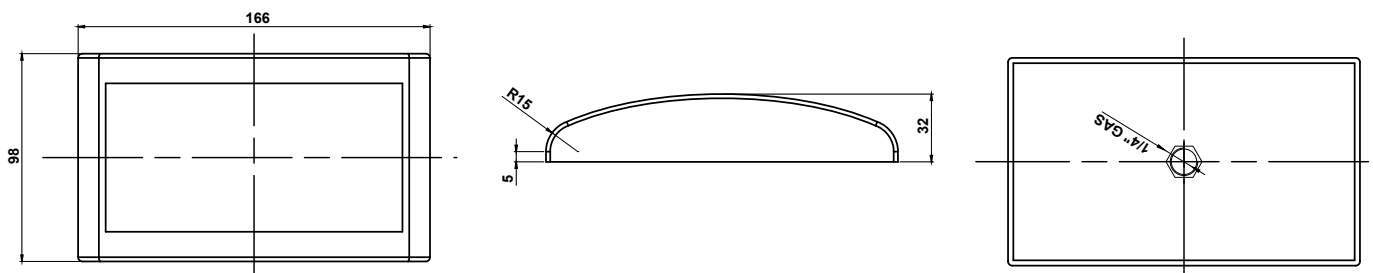




I100 - Aeration pads



| FEATURES | | |
|----------|-------------------|------|
| PRODUCT | AIR CONSUMPTION | |
| | 0.2 bar (2.9 psi) | |
| | l/min | cfm |
| I100 | 2 | 0.07 |

I100 - AERATION PADS

| | |
|-----------------|---------------------------------|
| APPLICATION | Hopper and silo |
| POWDER | Fine and dust (cement and lime) |
| PROBLEM SOLVING | Bridge and rat-holing |

FEATURES

| | |
|---------------------|---|
| DUTY CYCLE | Continuous |
| WORKING PRESSURE | 0.2 bar (2.9 psi) |
| PNEUMATIC CIRCUIT | Filter + flow control valve |
| AIR SUPPLY QUALITY | Class 5.4.1. |
| WORKING TEMPERATURE | From -20°C to 80°C (from -4°F to 176°F) |
| TECHNOLOGY | Fluidification |
| MATERIAL | Sintered PET filter, PS body |

